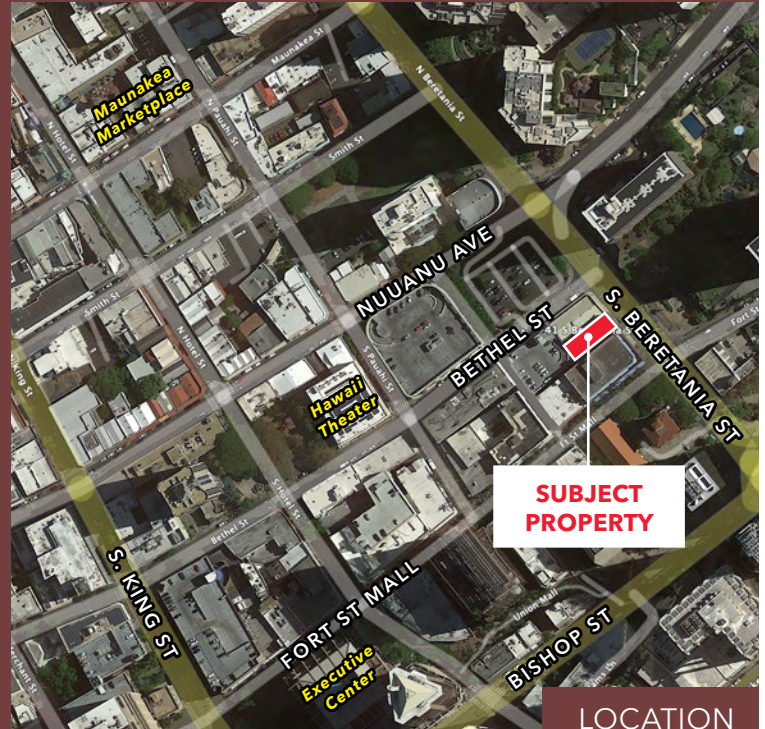


MIXED USE BUILDING FOR SALE

EDWIN THOMAS HOME | 41 S BERETANIA ST, HONOLULU, HI 96813



LOCATION



Rare opportunity to acquire the Edwin Thomas Home at 41 South Beretania Street, a fee simple, stand-alone building in Downtown Honolulu. Conveniently located on Beretania Street with the nearest cross street being Bethel Street. Contact Roger Lyons for more information today.

ASKING PRICE: \$3,250,000

TMK: 1-2-1-003-006

ZONING: BMX-4 Central Business Mixed Use

TENURE: Fee Simple

LAND AREA: 3,657 SF

BUILDING AREA: 13,804 SF

BEALL CORP
RETAIL REAL ESTATE

1120 12TH AVENUE, SUITE 301 | HONOLULU, HI 96816
WWW.THEBEALLCORPORATION.COM

Information deemed reliable but not guaranteed. © copyright 2023 The Beall Corporation.

ROGER LYONS (B), PRINCIPAL

(808) 469-4330

ROGER@THEBEALLCORPORATION.COM



MIXED USE BUILDING FOR SALE

EDWIN THOMAS HOME | 41 S BERETANIA ST, HONOLULU, HI 96813



DROPPED PARCELS: 7, 21, 23-25

DEPARTMENT OF BUDGET & FISCAL SERVICES REAL PROPERTY ASSESSMENT DIVISION TAX MAPS BRANCH CITY & COUNTY OF HONOLULU TAX MAP		
FIRST TAXATION DIVISION		
ZONE	SECTION	PLAT
2	1	003
SCALE: 1 INCH = 30 FEET		

COPYRIGHT CITY & COUNTY OF HONOLULU - ALL RIGHTS RESERVED 2018

FOR PROPERTY ASSESSMENT PURPOSES, PARCELS MAY NOT BE LEGALLY SUBDIVIDED LOTS - SUBJECT TO CHANGE

TAX MAP



1120 12TH AVENUE, SUITE 301 | HONOLULU, HI 96816
WWW.THEBEALLCORPORATION.COM

Information deemed reliable but not guaranteed. © copyright 2023 The Beall Corporation.

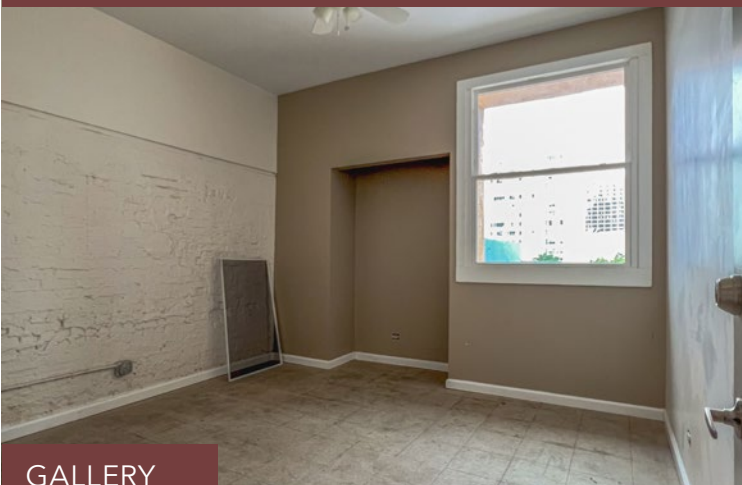
ROGER LYONS (B), PRINCIPAL
(808) 469-4330

ROGER@THEBEALLCORPORATION.COM



MIXED USE BUILDING FOR SALE

EDWIN THOMAS HOME | 41 S BERETANIA ST, HONOLULU, HI 96813



GALLERY



B BEALL CORP
RETAIL REAL ESTATE

1120 12TH AVENUE, SUITE 301 | HONOLULU, HI 96816
WWW.THEBEALLCORPORATION.COM

Information deemed reliable but not guaranteed. © copyright 2023 The Beall Corporation.

ROGER LYONS (B), PRINCIPAL
(808) 469-4330
ROGER@THEBEALLCORPORATION.COM

