

AVAILABLE FOR SALE

# TURNKEY NORTH SHORE SURF SHOP


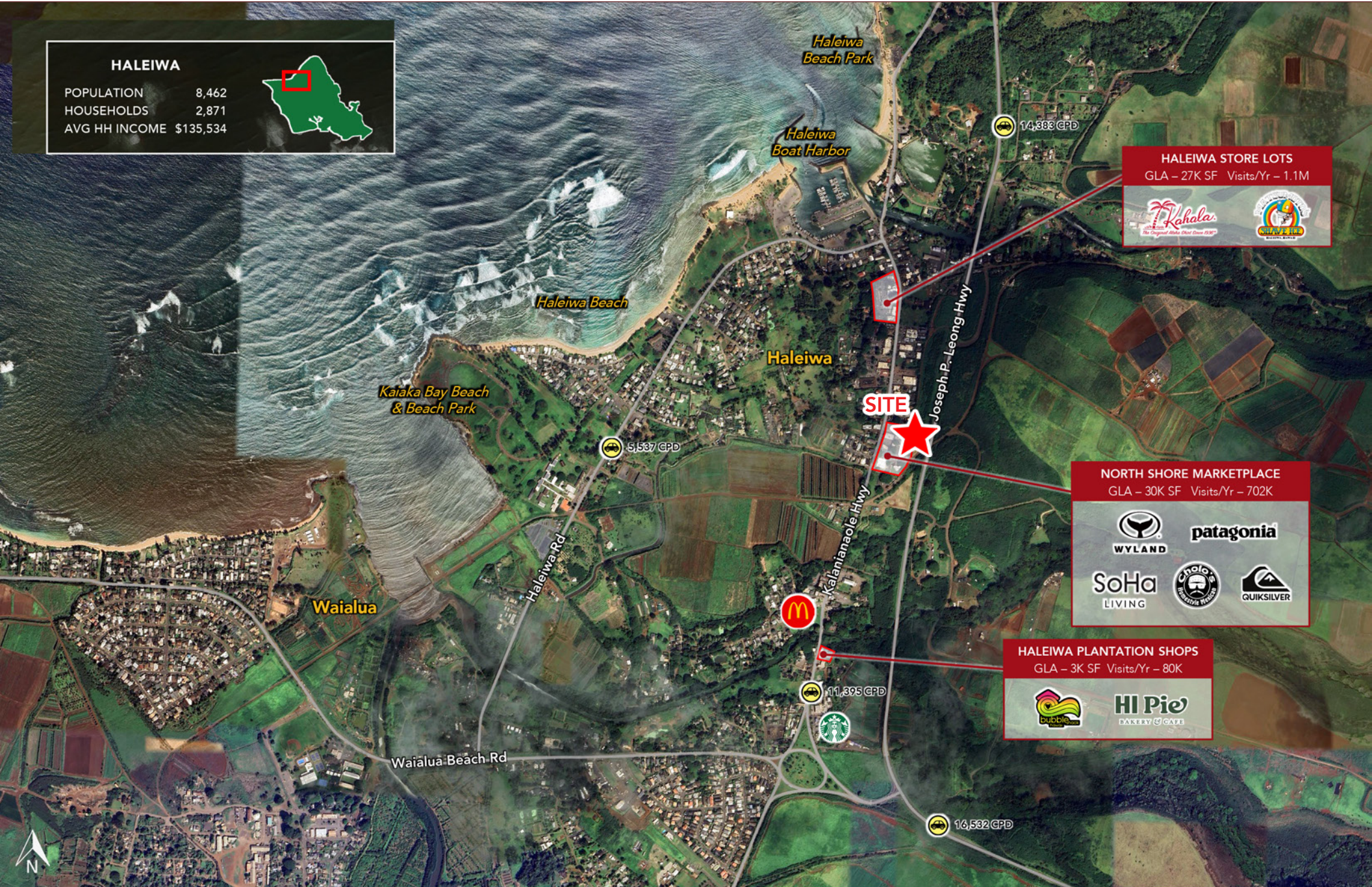
66-250 KAMEHAMEHA HWY, STE B, HALEIWA HI 96712



# SUBMARKET OVERVIEW - HALEIWA, OAHU

**HALEIWA**

POPULATION	8,462
HOUSEHOLDS	2,871
AVG HH INCOME	\$135,534

**HALEIWA STORE LOTS**  
 GLA – 27K SF Visits/Yr – 1.1M



**NORTH SHORE MARKETPLACE**  
 GLA – 30K SF Visits/Yr – 702K



**HALEIWA PLANTATION SHOPS**  
 GLA – 3K SF Visits/Yr – 80K




# PROPERTY OVERVIEW

This is a rare opportunity for a well established surf shop and board shaping facility on the north shore of Oahu. Established track record of 35 years doing business The building includes a store front as well as an attached warehouse and three shaping rooms. There is plenty of free customer parking the building. The premium price includes all existing FF&E, full equipment list available upon request.



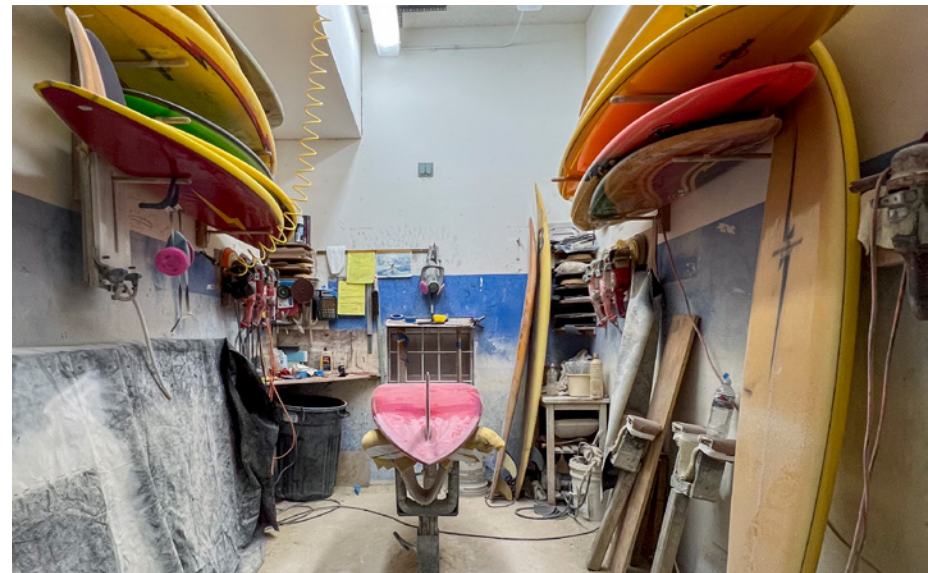
## SALE DETAILS

SIZE	3,000 SF Retail <u>1,800 SF Industrial</u> 4,800 SF Total
UNIT	B
PREMIUM	Contact Sales Agent
AVAILABILITY	Immediately
RENT	Contact Sales Agent
TERM	Negotiable
EQUIPMENT LIST	Available upon request
HIGHLIGHTS	<ul style="list-style-type: none"><li>• Turnkey surf shop</li><li>• Well established company</li><li>• Attached warehouse and shaping rooms</li><li>• Free Customer parking</li></ul>

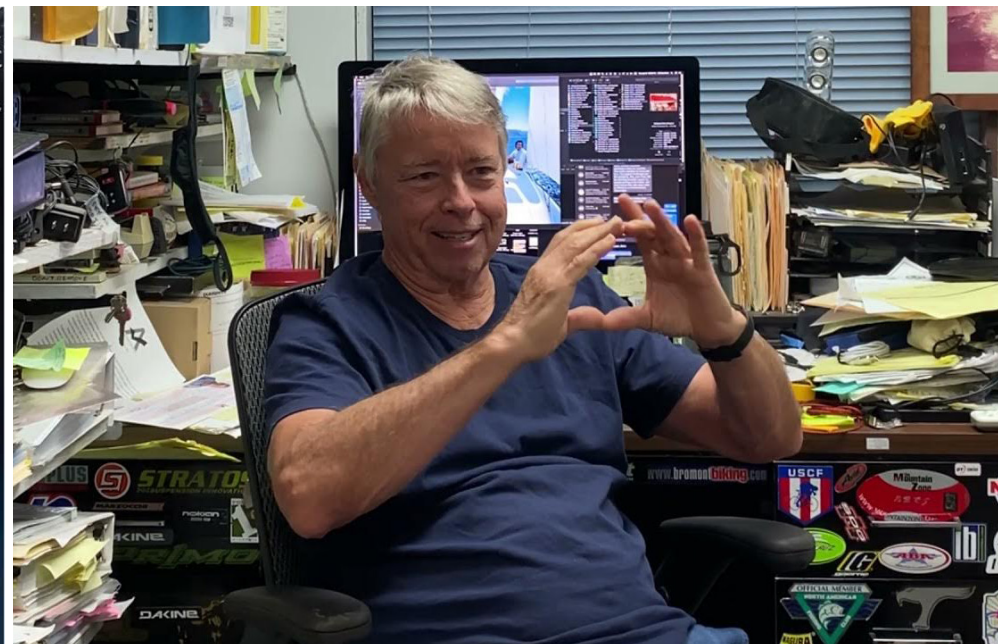
# PROPERTY GALLERY - EXTERIOR



# PROPERTY GALLERY - INTERIOR



# BILL BARNFIELD - WORLD RENOWNED SURFER, SHAPER AND SPORTSMAN



Bill Barnfield is a renowned figure in the surfing world, celebrated for his contributions as a surfer, shaper, and innovator. He gained prominence in the 1970s and 1980s, particularly for his prowess on Hawaii's North Shore, where he surfed some of the largest waves. Barnfield was a key member of the Lightning Bolt crew, a group that significantly influenced the professional surfing era. He is also recognized for his expertise in surfboard design, having perfected high-performance equipment tailored for Hawaiian waves. Beyond surfing, Barnfield's diverse interests include sailing and mountain biking, where he even achieved a World Championship. His legacy in the surfing community is marked by his innovative spirit and dedication to advancing the sport.

Located in Historic Downtown Haleiwa, Barnfield's Raging Isle opened its doors in 1988. Owned and operated by Bill and Wendy Barnfield, Raging Isle caters to the needs of the North Shore's sports enthusiasts.



1120 12TH AVENUE, SUITE 301  
HONOLULU, HI 96816  
WWW.THEBEALLCORPORATION.COM

Scan or visit [eepurl.com/c2rzHH](http://eepurl.com/c2rzHH)  
to sign up for The Beall Corporation  
Newsletters and stay on top of  
Hawaii's Commercial Real Estate News

