

# PRIME RESTAURANT SPACE AVAILABLE

WAIKIKI BEACH WALK  
227 LEWERS ST, HONOLULU, HI 96815



# LEASE DETAILS



## RENT DETAILS

UNIT	L215 & L212 2,129 - 2,479 SF
AVAILABILITY	Immediately
TERM	Negotiable
MINIMUM RENT	Contact agent for details
PERCENTAGE RENT	Negotiable
CAM	\$2.11 PSF/Month
RPT/BID/SID	\$1.23 PSF/Month
PROMO	\$0.70 PSF/Month
SPACE HIGHLIGHTS	<ul style="list-style-type: none"><li>• Walking distance to 7,000+ hotel rooms</li><li>• Second generation restaurant space</li><li>• Existing grease trap and hood</li><li>• Outdoor seating available</li></ul>

OWNED BY



OPERATED BY RETAIL RESORT  
PROPERTIES LLC

**JULIA MATSUURA (S), SENIOR VICE PRESIDENT**  
(808) 469-4308  
JULIA@THEBEALLCORPORATION.COM

**CHRIS YARIS (S), SENIOR VICE PRESIDENT**  
(808) 469-4337  
CHRIS@THEBEALLCORPORATION.COM

**CATON SMITH (S), ASSOCIATE**  
(808) 469-4338  
CATON@THEBEALLCORPORATION.COM



# PHOTO GALLERY



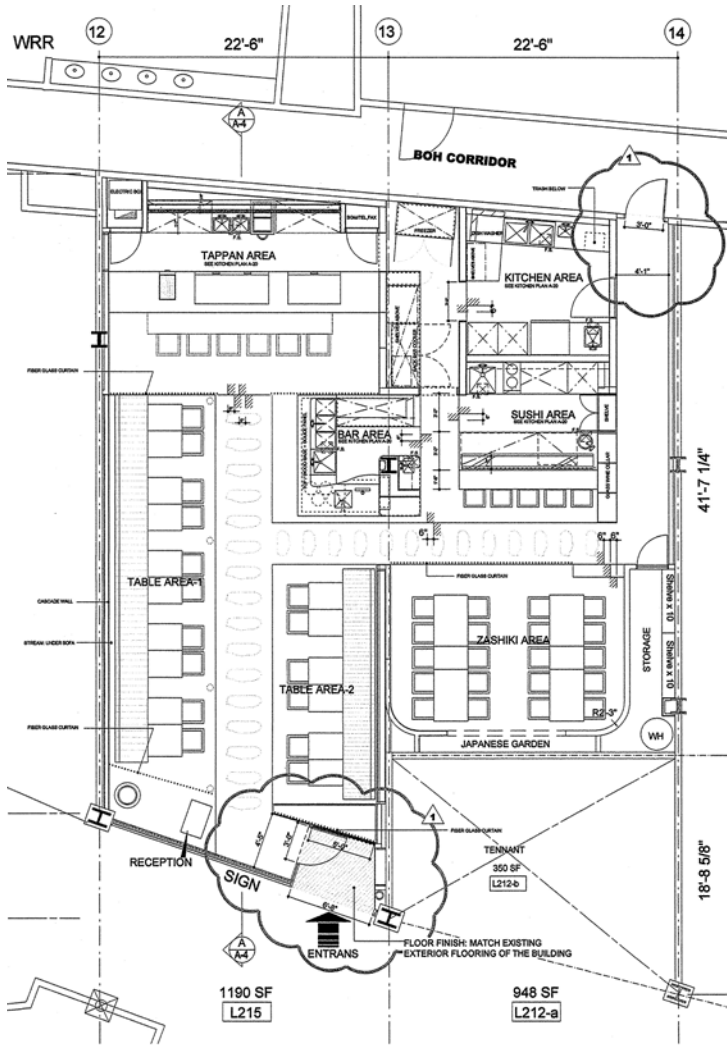
OWNED BY  
**AMERICAN ASSETS TRUST**  
OPERATED BY RETAIL RESORT PROPERTIES LLC

**JULIA MATSUURA (S), SENIOR VICE PRESIDENT**  
(808) 469-4308  
JULIA@THEBEALLCORPORATION.COM

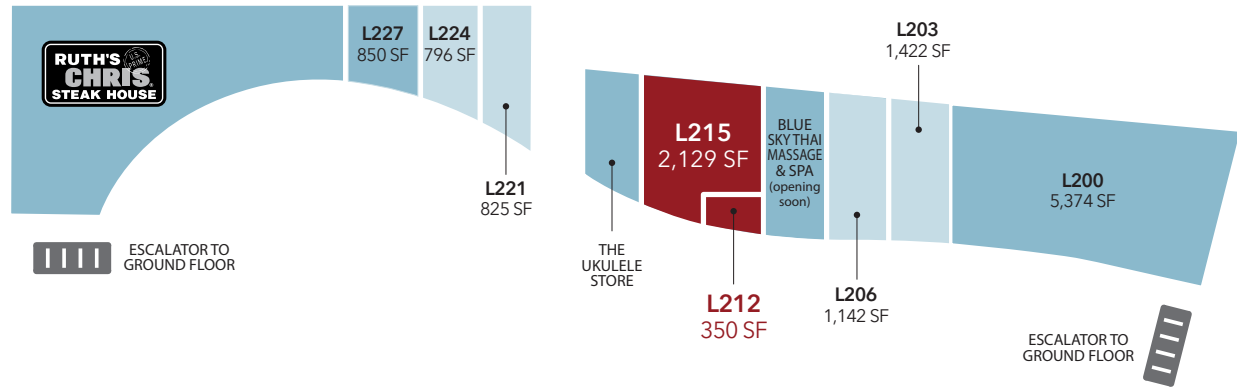
**CHRIS YARIS (S), SENIOR VICE PRESIDENT**  
(808) 469-4337  
CHRIS@THEBEALLCORPORATION.COM

**CATON SMITH (S), ASSOCIATE**  
(808) 469-4338  
CATON@THEBEALLCORPORATION.COM

**BEALL CORP**  
RETAIL REAL ESTATE



FLOOR PLAN - 2,129 - 2,479 SF



This document has been prepared by The Beall Corporation for advertising and general information only. The Beall Corporation makes no guarantees, representations or warranties of any kind, expressed or implied, regarding the information including, but not limited to, warranties of content, accuracy and reliability. Any interested party should undertake their own inquiries as to the accuracy of the information. The Beall Corporation excludes unequivocally all inferred or implied terms, conditions and warranties arising out of this document and excludes all liability for loss and damages arising there from. This publication is the copyrighted property of The Beall Corporation and/or its licensors(s). © Copyright 2024. All rights reserved.



Scan or visit [eepurl.com/c2rzHH](http://eepurl.com/c2rzHH) to sign up for The Beall Corporation Newsletters and stay on top of Hawaii's Commercial Real Estate News