

PRIME RESTAURANT SPACE AVAILABLE

WAIKIKI BEACH WALK
227 LEWERS ST, HONOLULU, HI 96815




WAIKIKI
BEACH WALK

 BEALL CORP
RETAIL REAL ESTATE

LEASE DETAILS



RENT DETAILS

AVAILABLE UNIT	L200 5,374 SF
AVAILABILITY	Immediately
TERM	Negotiable
MINIMUM RENT	Contact agent for details
PERCENTAGE RENT	Negotiable
CAM	\$2.11 PSF/Month
RPT/BID/SID	\$1.23 PSF/Month
PROMO	\$0.70 PSF/Month
SPACE HIGHLIGHTS	<ul style="list-style-type: none">• Walking distance to 7,000+ hotel rooms• Second generation restaurant space• Existing grease trap and hood• Outdoor seating available

OWNED BY



OPERATED BY RETAIL RESORT
PROPERTIES LLC

JULIA MATSUURA (S), SENIOR VICE PRESIDENT
(808) 469-4308
JULIA@THEBEALLCORPORATION.COM

CHRIS YARIS (S), SENIOR VICE PRESIDENT
(808) 469-4337
CHRIS@THEBEALLCORPORATION.COM

CATON SMITH (S), ASSOCIATE
(808) 469-4338
CATON@THEBEALLCORPORATION.COM



PHOTO GALLERY



OWNED BY
**AMERICAN
ASSETS
TRUST**
OPERATED BY RETAIL RESORT
PROPERTIES LLC

JULIA MATSUURA (S), SENIOR VICE PRESIDENT
(808) 469-4308
JULIA@THEBEALLCORPORATION.COM

CHRIS YARIS (S), SENIOR VICE PRESIDENT
(808) 469-4337
CHRIS@THEBEALLCORPORATION.COM

CATON SMITH (S), ASSOCIATE
(808) 469-4338
CATON@THEBEALLCORPORATION.COM

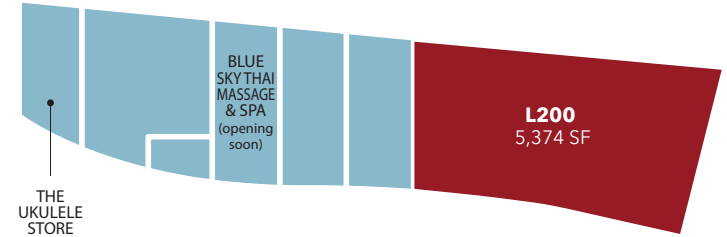
BEALL CORP
RETAIL REAL ESTATE

LEASING DIAGRAM

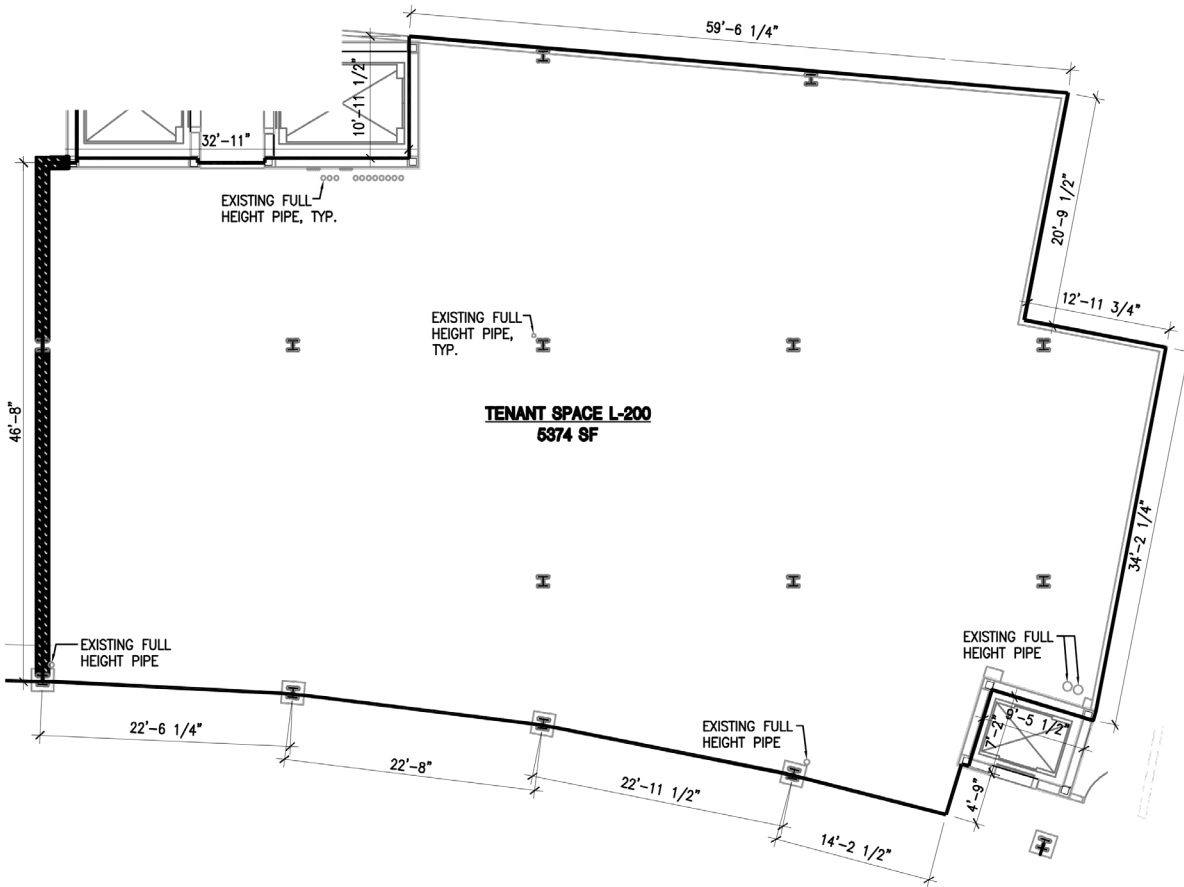
SECOND FLOOR



|||| ESCALATOR TO GROUND FLOOR



ESCALATOR TO GROUND FLOOR



FLOOR PLAN

LOD - SPACE L200 - 5,374

This document has been prepared by The Beall Corporation for advertising and general information only. The Beall Corporation makes no guarantees, representations or warranties of any kind, expressed or implied, regarding the information including, but not limited to, warranties of content, accuracy and reliability. Any interested party should undertake their own inquiries as to the accuracy of the information. The Beall Corporation excludes unequivocally all inferred or implied terms, conditions and warranties arising out of this document and excludes all liability for loss and damages arising there from. This publication is the copyrighted property of The Beall Corporation and/or its licensor(s). © Copyright 2024, All rights reserved.



Scan or visit eepurl.com/c2rzHH to sign up for The Beall Corporation Newsletters and stay on top of Hawaii's Commercial Real Estate News

WWW.THEBEALLCORPORATION.COM
1120 12TH AVENUE, SUITE 301 | HONOLULU, HI 96816

BEALL CORP
RETAIL REAL ESTATE